

HEALTH EQUITY PILOT PROJECTS

Informational Webinar

April 18, 2025

Trish Cerza, Network Development Manager
Lindsey Shankle, Community Data Manager



AGENDA

1

LAND ACKNOWLEDGEMENT & CHOICE
BACKGROUND

2

HEALTH EQUITY PILOT PROJECTS:
OPPORTUNITY OVERVIEW

3

DATA, REPORTING EXPECTATIONS AND
THEMES FOR CONSIDERATION

4

WIZEHIVE PLATFORM

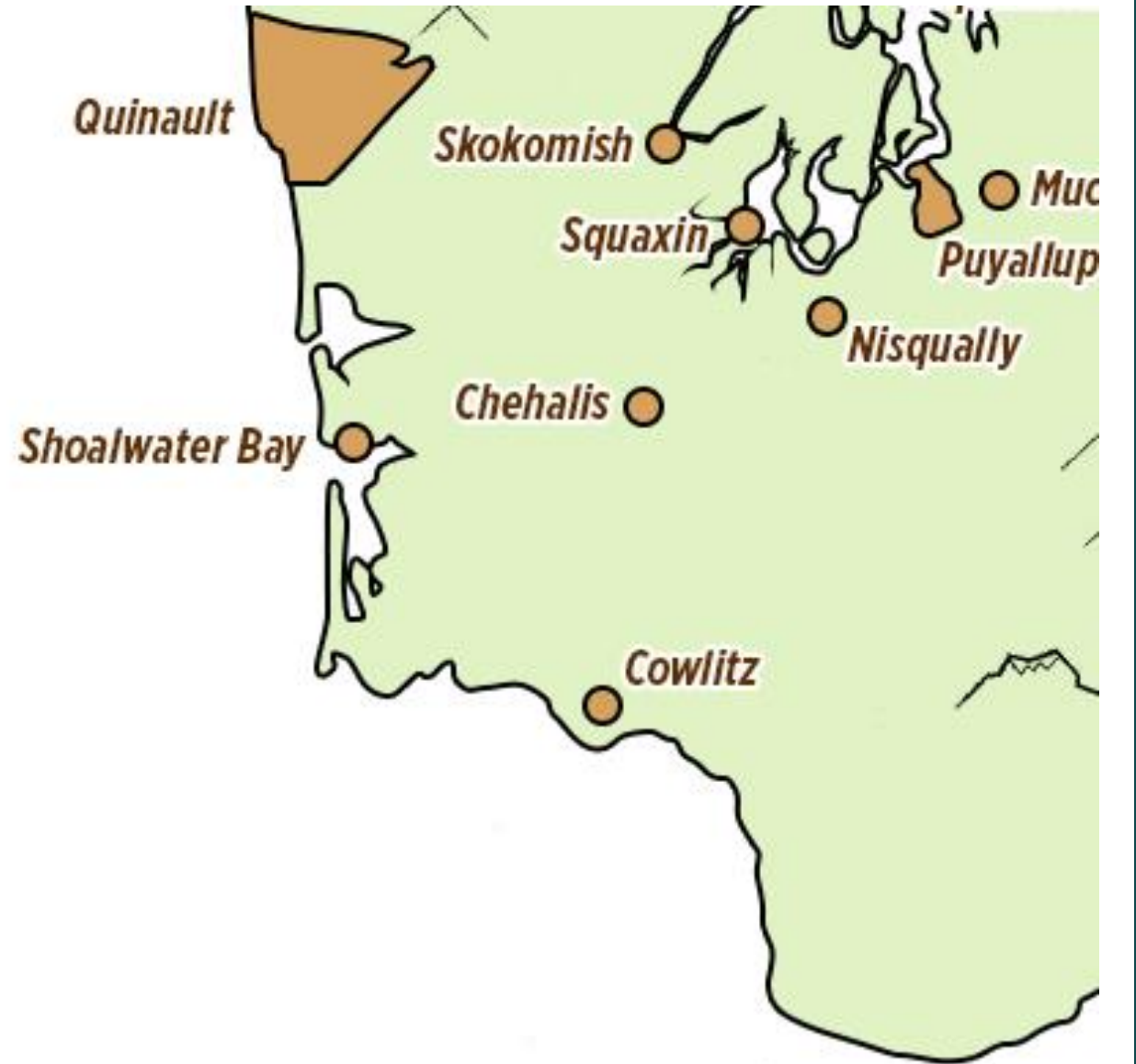
5

NEXT STEPS, AND QUESTIONS

TRIBAL LAND ACKNOWLEDGMENT

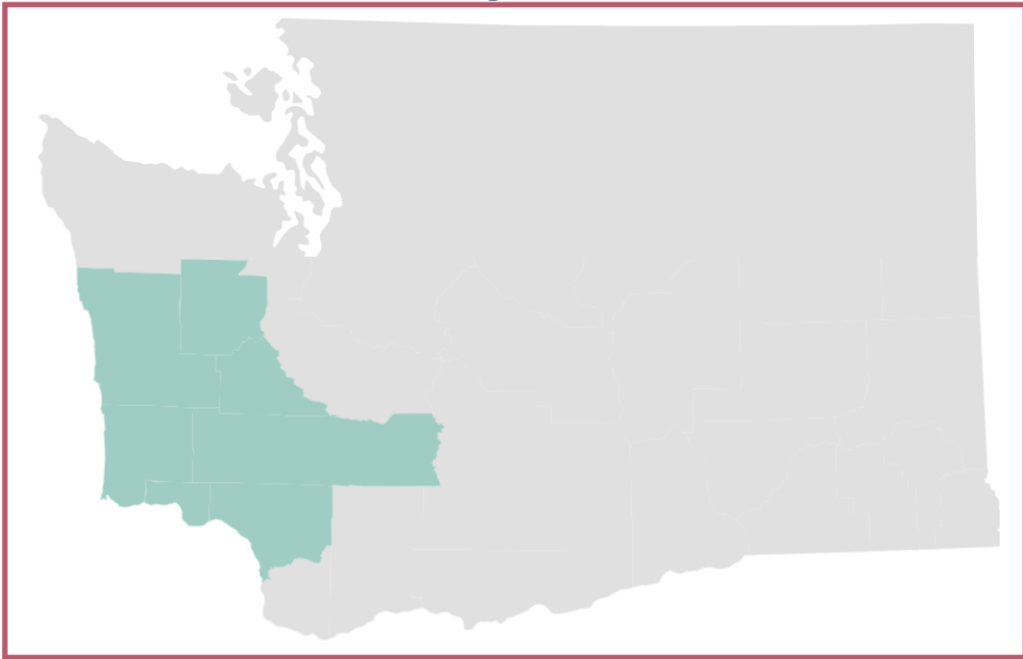
We acknowledge that our location and our partners are on the homelands of Native peoples, who have lived in this region since time immemorial. We are grateful for the hospitality of the **Chehalis, Chinook, Cowlitz, Nisqually, Quinault, Shoalwater Bay, Skokomish, and Squaxin Island Tribes** and we express our deepest respect for these original and current caretakers of the region.

As an organization and community supporting health, we acknowledge our responsibility to establish and maintain relationships with these Tribes and Native peoples, in support of tribal sovereignty and the inclusion of their voices in our work. We also pledge that these relationships will consist of mutual trust, respect, and reciprocity.



WHO WE ARE

We are the Accountable Community of Health (ACH) serving the Central Western Washington region.



We serve everyone in the jurisdictions of Thurston, Mason, Lewis, Cowlitz, Pacific, Grays Harbor, and Wahkiakum counties and the sovereign nations of the Chehalis, Chinook, Cowlitz, Nisqually, Quinault, Shoalwater Bay, Skokomish, and Squaxin Island Tribes.

WHAT

ACHs are regional organizations that work with their communities on health care and social needs-related projects and activities.

WHY

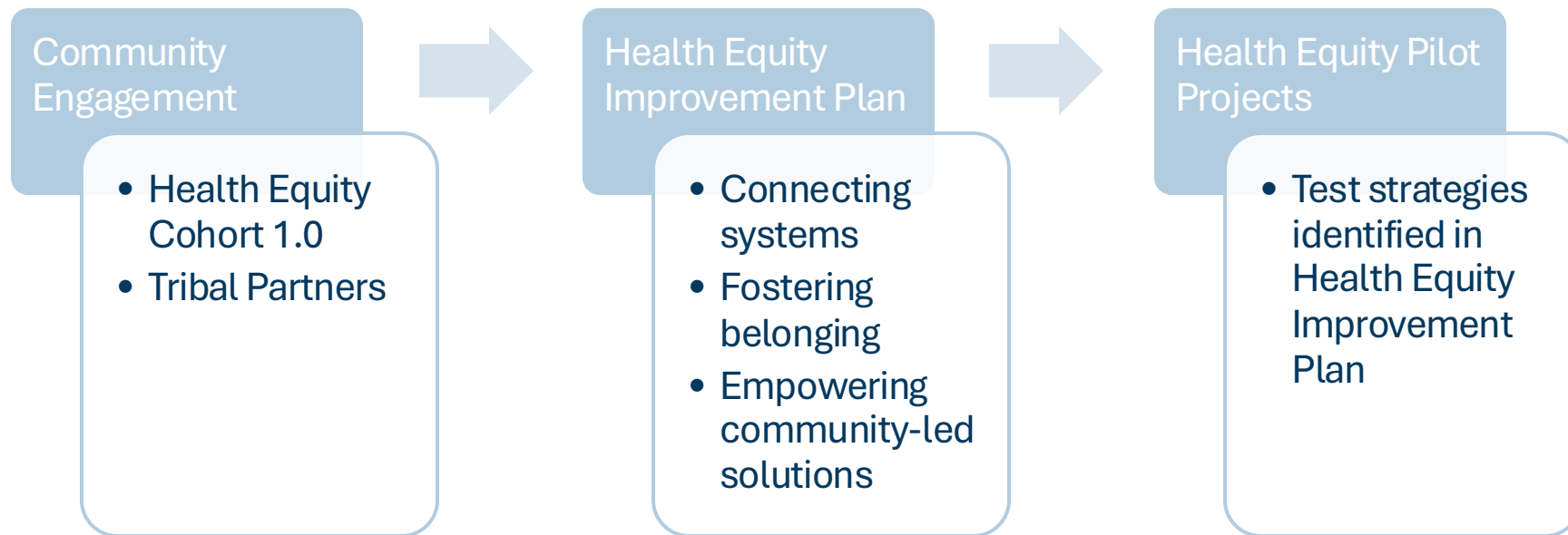
Nine ACHs were established by the Health Care Authority to be neutral conveners, investors, and coordinating bodies between the health care delivery system and local communities.

At the heart of ACHs is an unwavering commitment to health equity. Our goal is to ensure that everyone, regardless of their background or circumstances, has the opportunity to live their healthiest life. This means addressing disparities and championing fairness and justice in health, social, behavioral, and community services.

OPPORTUNITY OVERVIEW

Health Equity Pilot Projects

This request seeks proposals for pilot projects that address opportunities to promote health equity in our region.



HEALTH EQUITY IMPROVEMENT PLAN

Key themes and strategies



Connecting systems

When formal and informal systems of care are connected, coordinated services can address medical needs while also tackling other conditions that influence a person's ability to thrive, such as food access, housing, and transportation.



Fostering belonging

When organizations, neighbors, and local leaders collaborate to prioritize belonging, they create an environment where people are more engaged, supportive, and informed. This inclusivity builds trust and fosters a sense of shared responsibility for community well-being.



Empowering community-led solutions

Collective action recognizes that sustainable change doesn't happen in isolation. Instead, it emerges when communities come together to identify their challenges, pool resources, and co-design solutions.

PILOT PROJECT FUNDING AND ELIGIBILITY

AVAILABLE FUNDING

- CHOICE has dedicated approximately \$725,000+ for pilot projects.
- TRACK 1—Small projects: up to \$10,000
 - Streamlined application
- TRACK 2—Large Projects: up to \$100,000
 - Comprehensive application

ELIGIBILITY

- Operating within the CHOICE service area
- Organizational capacity: to receive funding, use funding received specific to approved activities, report on expenses, and provide fiscal documentation requested by CHOICE

SCOPE OF WORK/PROJECT DETAILS

Project planning & Design

- Clearly define the project goals, objectives, and intended outcomes
- Develop a project plan, including activities, timelines, and deliverables.
- Describe the priority population and how the project will address health equity

Project Implementation

- Implement the approved project plan, carry out activities
- Manage project resources, including budget, personnel, and materials

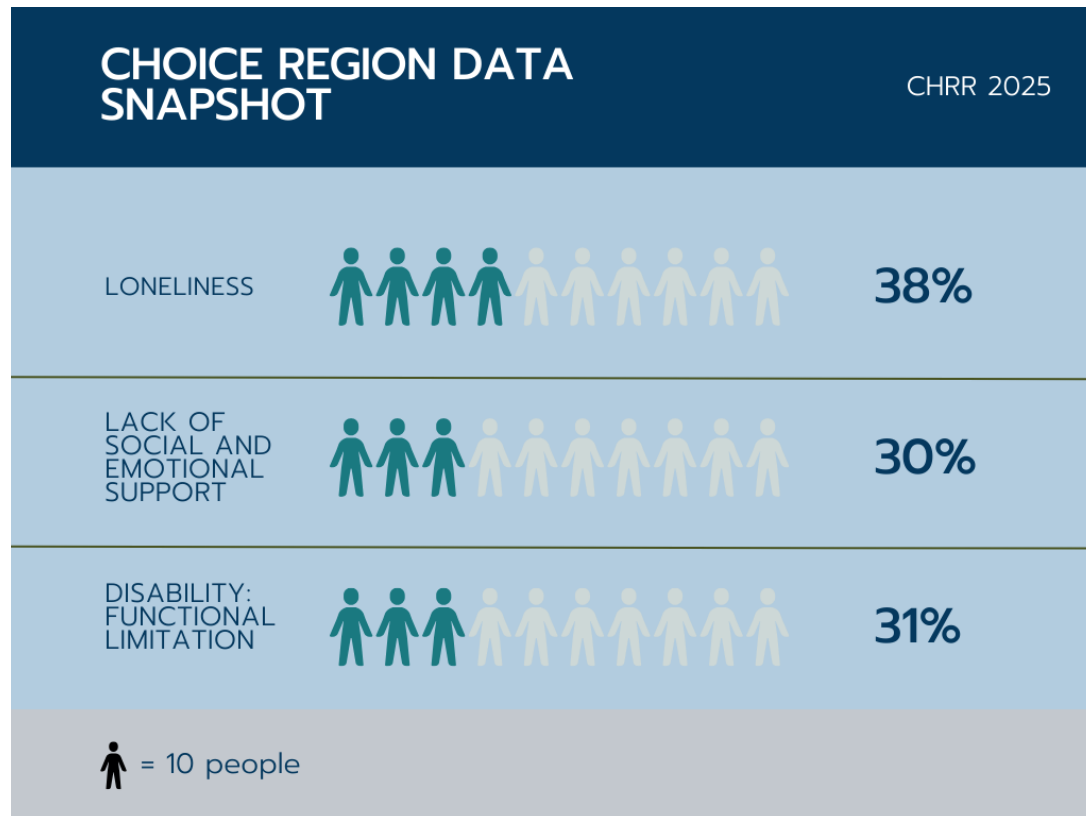
Data Collection and Reporting

- Develop and implement a data collection plan to track progress and outcomes.
- Prepare and submit regular progress reports according to the specified schedule.
- Participate in project evaluation

Dissemination and Sustainability

- Plan for disseminating project findings and lessons learned to relevant audiences, including the Health Equity cohort.
- Outline strategies for sustaining the project's impact beyond the funding period

DATA-INFORMED STRATEGY CONSIDERATIONS: COUNTY HEALTH RANKINGS & ROADMAPS 2025 DATA RELEASE



- **Feelings of Loneliness:** Percentage of adults reporting that they always, usually or sometimes feel lonely. (range = 37%-40%, WA State = 36%)
- **Lack of social and emotional support:** Percentage of adults reporting that they sometimes, rarely, or never get the social and emotional support they need. (range = 29%-31%, WA State = 11%*)
- **Disability: Functional limitations:** Percentage of the population aged 18 and over who reported difficulty in hearing, vision, cognition, mobility, self-care, or independent living. (range = 27%-34%, WA State = 27%)

PROJECT EXAMPLES

Bridging gaps between formal and informal systems

Community Initiated Care

Low intensity interventions for the community, by the community

Mentorship and Leadership Development

Centering belonging and building mutual understanding

Storytelling and narrative change

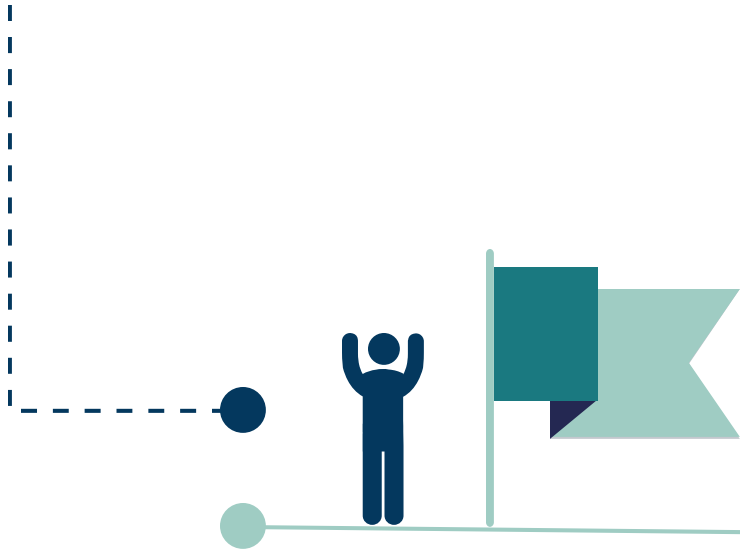
Listening sessions, participatory research

Collective action via community-led solutions

Mobile community resource hubs

Grassroots advocacy groups

WHAT CAN I EXPECT FROM THE APPLICATION?



01

CREATE AN ACCOUNT

Create a user account on WizeHive platform

COMPLETE YOUR PROFILE

Enter organizational Information

02

03

SELECT PROJECT TRACK

Track 1: <\$10,000
Track 2: >\$10,000

COMPLETE APPLICATION

Project summary, design, budget, timeline, evaluation plan

04

WHAT CAN I EXPECT FROM THE APPLICATION?

Web-based platform <https://choice.wizehive.app/program/health-equity-pilot-projects>

Track 1 (small projects) application elements

Project summary & connection to themes

- Provide a project description and outline of activities

Contribution to shared learning & collaboration

- How would this project contribute to shared learning?

Funding requested & resources needed

Support needed

- Other types of support that would help ensure project success?

WHAT CAN I EXPECT FROM THE APPLICATION?

Track 2 (large projects) application elements

Project summary & connection to health equity themes

- Project description with main goals

Context and background

- Community context – why this project for this community?
- Existing partners and resources

Project design

- Outline of activities and timeline
- New partners/connections this project aims to make

Evaluation & sustainability plan

- Key outcomes and how you will track them (# of people served, # of partnerships formed)
- Data collection
- Sustainability ideas

Funding requested & resources needed

- Optional budget template for creating project budget
- Other types of support that would help ensure project success?

PROJECT PROPOSAL SELECTION CRITERIA

Proposals will be reviewed by a mix of internal staff and external partners using the following selection criteria:

Track 1	Track 2
<ul style="list-style-type: none">• Alignment with cohort goals• Shared learning contribution	<ul style="list-style-type: none">• Alignment with cohort goals• Feasibility & readiness• Potential for impact• Innovation & scalability• Shared learning contribution• Evaluation and sustainability

PROJECT REPORTING

Reporting

- Designed to align with proposal elements
- Project activities carried out
- Data collection
- Financial summary
- Key learnings

Report schedule dependent on project track & duration

Evaluation

- Designed to use outcome measures you proposed
- Number of participants enrolled, connections made
- *Demographics: age, sex, race/ethnicity

Performance period/project duration

- Variable (6-12 months +)

Support and technical assistance

Office Hours

- Friday April 25 at 2 p.m.

Ongoing support

- Available for 1:1
- Trish: cerzap@crhn.org
- Lindsey: ShankleL@crhn.org

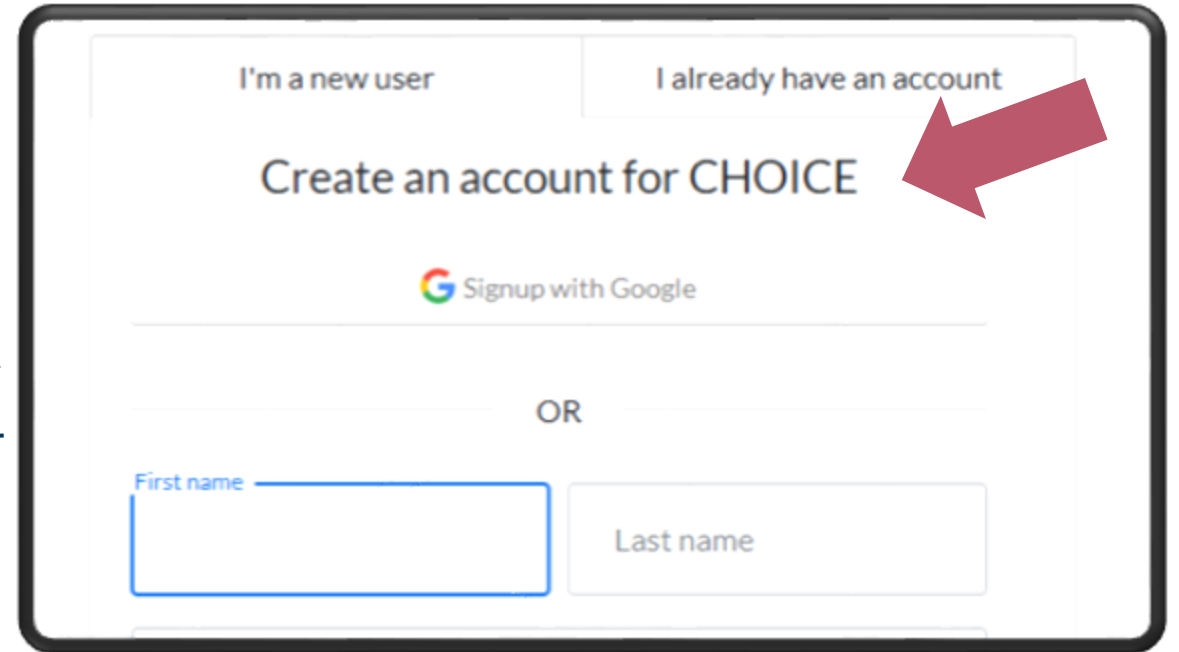
REQUEST FOR PROPOSALS: KEY DATES



INFORMATION + FEEDBACK

**Health Equity Pilot RFP
information, important dates,
and application:**

[https://choice.wizehive.app/program/
health-equity-pilot-projects](https://choice.wizehive.app/program/health-equity-pilot-projects)



I'm a new user | I already have an account

Create an account for CHOICE

Signup with Google

OR

First name | Last name



Questions, ideas, or feedback

Cerzap@crhn.org

QUESTIONS?

